

BUILDING THE LEADERS OF THE FUTURE

2010 KATIE SCHOOL SYMPOSIUM

The Katie School Symposium is a unique forum providing opportunity for industry experts, consulting firms, and academics to discuss pressing issues. This year's symposium will focus on Building Leaders for the Future.



**KATIE SCHOOL
OF INSURANCE AND
FINANCIAL SERVICES**
Illinois State University

The Insurance Industry is changing rapidly and along with these changes are the need to change the way in which leaders manage insurance organizations. Specifically, they need to be able to execute and develop strategy in a constantly changing environment, they need to be able to manage workers remotely, even globally, and they need to be able to quickly develop talent and mentor the next generation to fill the gap of retiring baby boomers. This Katie School Symposium addresses that leadership need and how to build leaders who can manage these challenges.

***Continental Breakfast
and Lunch is included.***

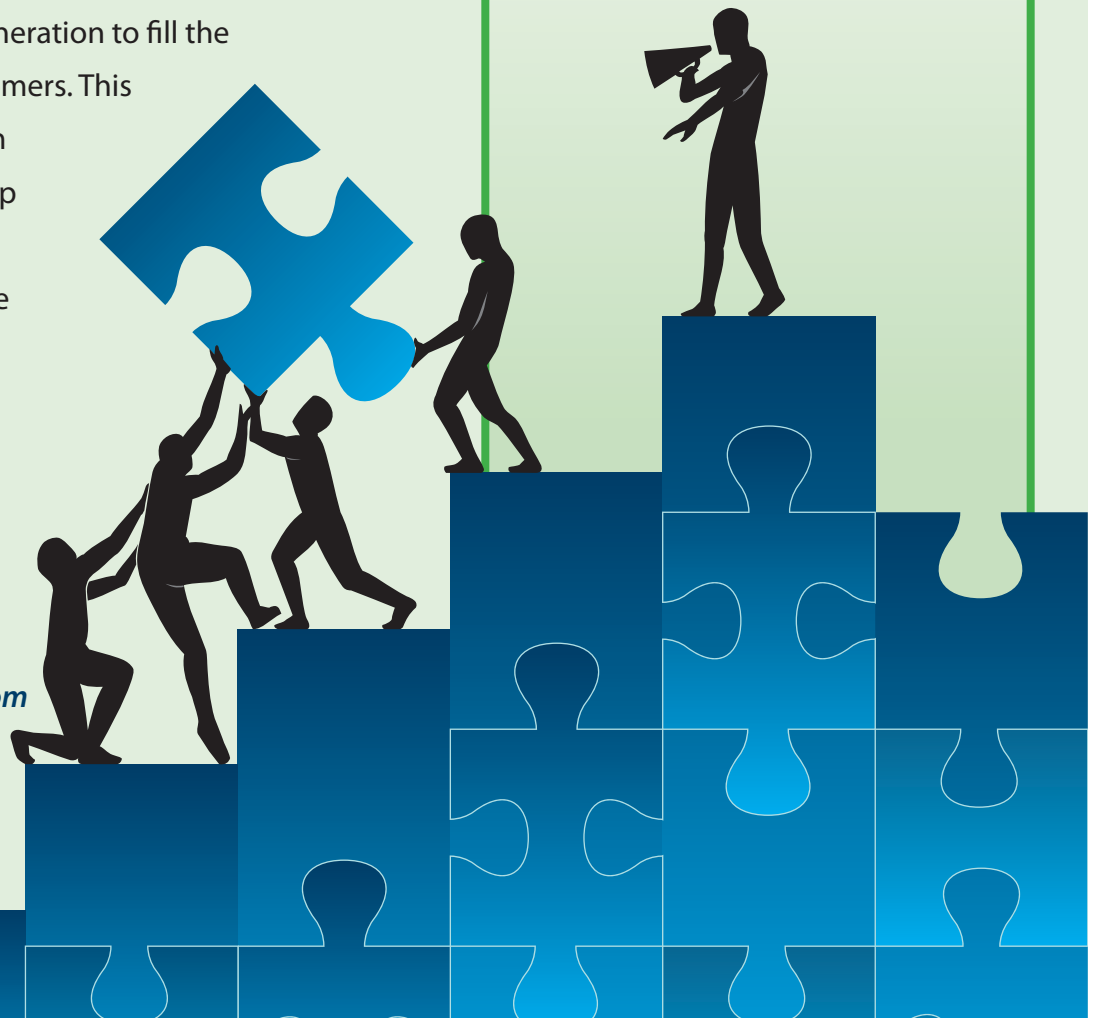
***Directions:
www.marriottnormal.com***

***Parking available in the
garage across the street
south of the Marriott.***

Tuesday, April 20, 2010

**Marriott
Bloomington-Normal
Hotel & Conference Center**

8:30 am – 3:30 pm



KATIE SCHOOL SYMPOSIUM 2010 PRESENTERS

Christine Sullivan – Executive Allstate Insurance

Christine is an Assistant Vice President in Claims at the Allstate Insurance Company. She has over 35 years in the industry and extensive experience in both Field Leadership and Home Office Staff positions in Claims, Human Resources, Education, and Compliance. She has helped Claims through a series of process and organizational changes. She shares her strategies for leading organizations in executing strategy in a changing environment

Donn Vuovich – President - HUB International Limited

Donn is the President, Brokerage Shared Services and a member of the Executive Management Team for Hub International Limited, a leading insurance brokerage company providing a broad array of property, casualty, risk management, employee benefits, investment and wealth management products across North America. Mr. Vuovich is responsible for all non-financial back office operations and processes required to support client transactions. Donn will share how his organization maintains relations and manages performance with employees around the country .

Tony Viola – Vice President of Marketing, Patni Americas

Tony started Patni's marketing operations in North America and brings to his position over 25 years of senior management experience in building global marketing organizations and operations for IT product and services companies. Tony will share his company's strategies for managing workers globally and across cultures.

Roger Turnquist – President of Leadership and Learning Partners

Roger has a Ph.D. in behavioral sciences and approaches people development from a behavioral change perspective. He has led organizational development and training functions at Zurich Insurance, LaSalle Bank, Northwestern Memorial Hospital. Roger has provided leadership and learning solutions for clients in the US, Canada, Europe, Asia and Australia. His latest work pioneers ways for employees to take responsibility for their own development. His interactive presentation presents the latest thinking on using mentoring as a broad-based informal learning resource.

Laura Erskine – Assistant Professor Management and Quantitative Methods, ISU

Laura received her Ph.D. in Business Administration from the Marshall School of Business at the University of Southern California. Her teaching interests are in the area of organizational behavior and leadership. Laura's research interests include the meaning of relational distance in leader-follower relationships, leadership in virtual settings, and emergent leadership in the context of collective action. Laura will share how to maintain and build relationships even when workers and management are separated physically.

Special Session

Insurance Industry professionals who have been mentors or mentees will share their stories, challenges, and successes.

Additional information is available at www.katieschool.org in the Industry section.
For questions call Sue Stombaugh at the Katie School (309) 438-3021 or skstomb@ilstu.edu

REGISTRATION

COST: Cost \$300 for Non-members, \$125 for Katie School Partners

Check the applicable box:

- Employee of an Insurance Organization on the Katie School Advisory Board (see www.katieschool.org advisory board for a complete listing)
- Member of IIA
- Member of RIMS
- Member of CPCU Society
- Member of IAIFA
- Member of Society of Financial Services Professionals
- ISU faculty/staff
- Non-member

Name: _____

Company: _____

Position: _____

Address: _____

State: _____ Zip: _____ E-mail: _____

Phone: _____ Fax: _____

Check One:

- Registration with check enclosed.
Mail form and check to:
Sue Stombaugh
Katie School of Insurance and Financial Services
Illinois State University
Campus Box 5490 • Normal, IL 61790-5490
- Credit card payment (by VISA, MC, Discover or AmEx) must be completed online at www.katieschool.org at the bottom of the home page.

